

VANCE AIR FORCE BASE

SHARE THE AIR



RAYTHEON T-6A TURBOPROP

Wing Span: 33' 5"
 Length: 33' 4"
 Max Weight: 6500 Lbs
 Range: 600 Miles
 Max Speed: 316 KIAS
 Max Altitude: 31,000'
 Engines: Pratt & Whitney PT6A-68 turboprop

BEECHCRAFT T-1A JAYHAWK

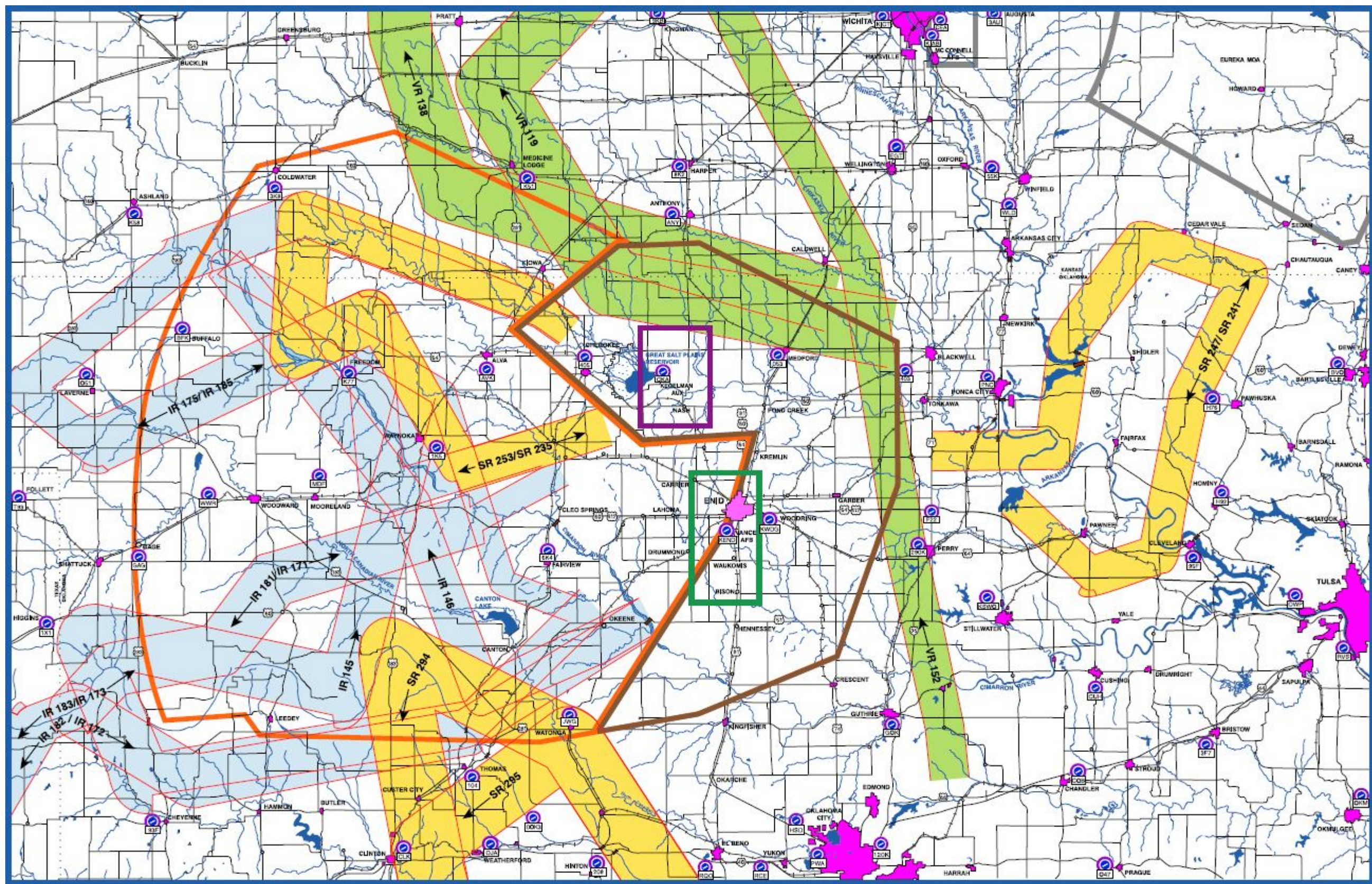
Wing Span: 43' 6"
 Length: 48' 5"
 Max Weight: 16,300 Lbs
 Range: 2,100 Miles
 Max Speed: 330 KIAS
 Max Altitude: 41,000'
 Engines: 2 JT-15D-5B Turboprops with 2,900 Lbs thrust each

NORTHROP T-38 TALON

Wing Span: 25' 3"
 Length: 46' 4"
 Max Weight: 12,800 Lbs
 Range: 900 Miles
 Max Speed: 710 KIAS
 Max Altitude: 39,000'
 Engines: 2 J85-GE-5R Turbojets with 3500 lbs thrust each

VANCE AFB LOCAL FREQUENCIES

120.525	VANCE APPROACH CONTROL
125.45	VANCE APPROACH CONTROL (EAST)
126.75	VANCE APPROACH CONTROL (WEST)
118.075	VANCE APPROACH CONTROL (NORTH)
121.3	VANCE ARRIVAL (EAST)
119.775	VANCE ARRIVAL (WEST)
124.05	VANCE TOWER
118.9	WOODRING TOWER
139.9	KEGELMAN AUXILIARY FIELD



THE THREAT
STUDENT TRAINING IN PROGRESS

Vance AFB trains over 475 pilots a year in 3 different high performance aircraft. This equates to almost 500,000 aircraft movements around Vance each year and amounts to almost 95,000 flying hours per year. In addition, Vance also has many RAPCON/Tower controllers in training. The airfield and traffic patterns are normally open from sunrise to sunset on Monday through Friday and most weeknights and Sunday afternoons at a reduced level. The MOA airspace is normally active from sunrise to sunset on Monday through Friday and occasionally on weeknights at a reduced level. We rarely fly on Saturdays, Federal Holidays, and the week between Christmas and New Year's Day. Operating hours are published in the NOTAMS. For your safety, as well as ours, we would like to point out our areas of operations. PLEASE USE EXTREME VIGILANCE IN THESE AREAS. For traffic separation, please contact Vance RAPCON on the frequencies listed.

IF YOU HAVE ANY QUESTIONS, PLEASE CALL:
 Vance Safety Office: (580) 213-7233
 Vance Airspace Office: (580) 213-7850

OR VISIT OUR WEBSITE AT:
<https://www.vance.af.mil/Portals/61/Nov2018MACARev1sed.pdf?ver=2018-11-27-105835-170>

VANCE AIR FORCE BASE

Depicted in dark green on this poster. Very high density T-6, T-38, and T-1 pattern operations from the surface to 4500' MSL and departures and practice approaches up to 15,000' MSL. The Alert Area extends from the surface up to 10,000' MSL. Departure/Recovery/Pattern speeds range from 110 to 230 KIAS for the T-6, 155 to 300 for the T-38, and 100 to 250 for the T-1. Transition Vance AFB outside of 10 miles, or above 6500' MSL.

KEGELMAN AUXILIARY FIELD

Depicted in purple on this poster. High density T-6 pattern operations from the surface to 3300' MSL and departures to 5500' MSL. The Alert Area extends from the surface to 10,000' MSL. The controllers primarily use UHF radios. Kegelman is closed to all civilian traffic. Transition Kegelman outside 10 miles or above 6500' MSL. For separation, contact Vance Approach Control (North) on 118.075.

MILITARY TRAINING ROUTES (MTRs)

Routes are normally active from 30 minutes after sunrise to 30 minutes prior to sunset, Monday through Friday and occasionally on weekends. For information about MTRs and their hours of operation, contact any FSS within 100 nautical miles of the route. This is a very demanding type of flying. Please attempt to cross/avoid these routes using the information listed under each type of route.

Weekly Flying Schedule

	T-1A	T-6A	T-38C
Monday	SR 241 SR 235	IR 171 IR 182 VR 119	IR 171 IR 182
Tuesday	SR 247	IR 171 IR 182 VR 119	IR 175
Wednesday	SR 241	IR 185 VR 119	IR 181 IR 183
Thursday	SR 247	IR 181 IR 183 VR 119	IR 185
Friday	SR 241 SR 253	IR 145 VR 119	IR 145
Saturday	SR 247	IR 185 VR 119	IR 181 IR 183
Sunday	SR 247	IR 185 VR 119	IR 181 IR 183

IFR MTRs (IRs)

Depicted in blue on this poster. These routes are flown between 500'-2500' AGL (2000'-4000' MSL). T-38s fly IRs at speeds up to 420 KIAS. T-1s fly IRs at speeds up to 300 KIAS. Many aircraft fly in 2-ship formations along these routes. Expect a formation spacing of anywhere from 3 feet up to 2 miles between aircraft. The routes extend between 2 and 6 miles on either side of centerline as shown on this poster. Please cross IRs at a 90 degree angle above 4500' MSL.

VFR MTRs (VRs)

Depicted in light green on this poster. These routes are flown between 500'-3000' AGL (2000'-4500' MSL). They are flown by Vance assigned aircraft as well as other military aircraft (primarily Tulsa Air National Guard F-16s) at speeds up to 550 KIAS in 4-ship formation. The routes extend between 3 and 5 miles on either side of centerline as shown on this poster. Please cross VRs at a 90 degree angle above 5500' MSL.

SLOW SPEED LTRs (SRs)

Depicted in yellow on this poster. These routes are flown between 500'-1500' AGL (2000'-3000' MSL). T-6 and T-1s fly SRs at speeds up to 250 KIAS. Many T-1s fly in 2-ship formation. The routes extend between 2 and 4 miles on either side of centerline as shown on this poster. Please cross SRs at a 90 degree angle above 3500' MSL. SRs are NOT depicted on en route charts.